

FOR SALE

Former Silver Slipper Restaurant

531 Silver Slipper Lane, Tallahassee, FL 32303



SALE PRICE

\$700,000.00

14,746 sf Commercial Building

Sale Rate	\$50.86 per sf
Year Built	1984
Leon County Parcel ID	21-24-70-000-0020
Lot Size	1.79 Acres

Site Description

This landmark is located on Silver Slipper Lane across from the Tallahassee Mall. It includes a spacious parking lot with great access. Zoned [Commercial Parkway](#).

Building Description

One story building with front car port. Includes a ball room, common dining space, kitchen, and restrooms.



COMMERCIAL REAL ESTATE

FOR ADDITIONAL INFORMATION, CONTACT:

LEWIS BUFORD | 850.591.6363 | lewis@TLGproperty.com

3520 THOMASVILLE ROAD, SUITE 200, TALLAHASSEE, FL 32309

Ph: 850.385.6363 Fax: 850.385.6337 www.TLGproperty.com



The information shown or contained herein is believed to be accurate but is not warranted or guaranteed, is subject to errors, omissions and changes without notice and should be independently verified.



COMMERCIAL REAL ESTATE

FOR ADDITIONAL INFORMATION, CONTACT:

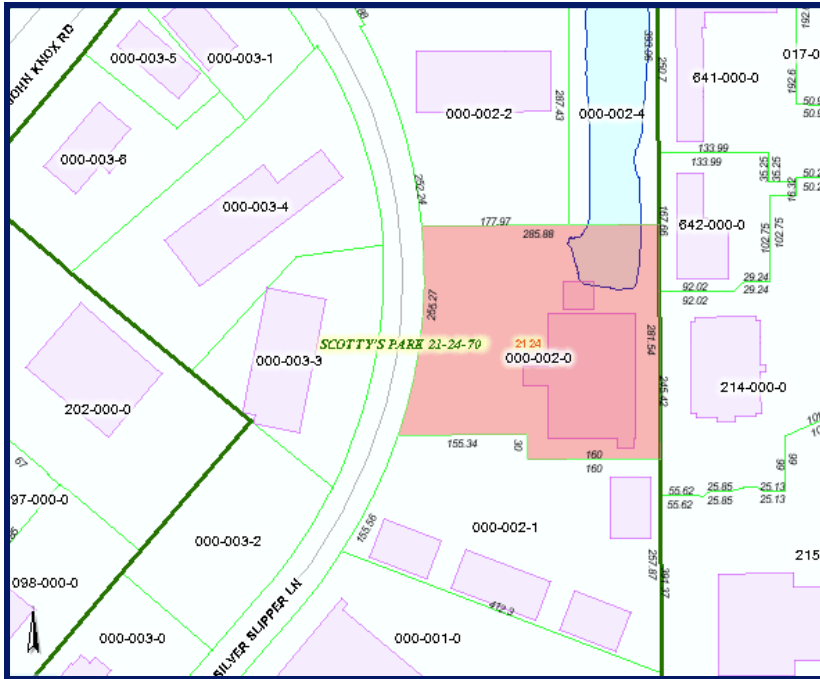
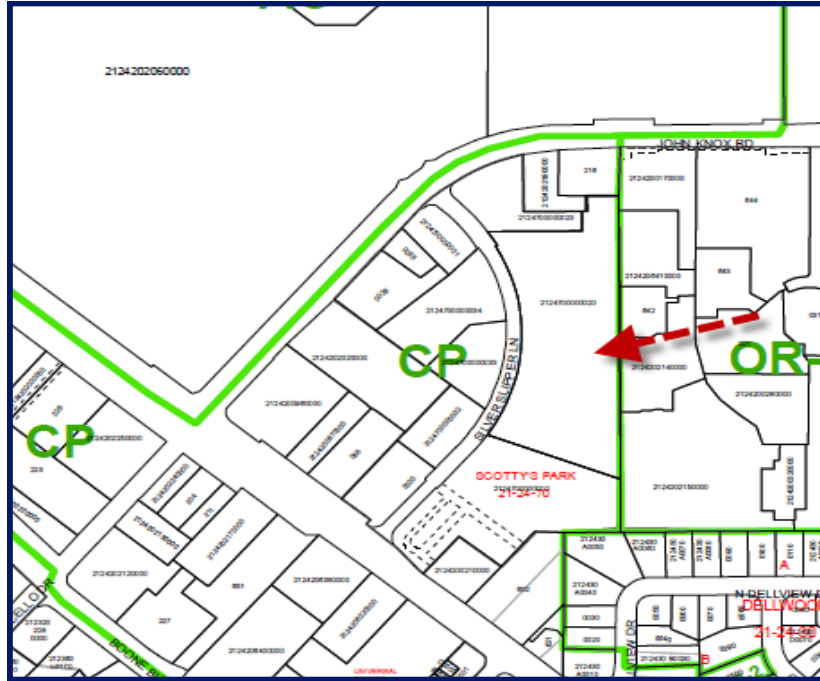
LEWIS BUFORD | 850.591.6363 | lewis@TLGproperty.com

3520 THOMASVILLE ROAD, SUITE 200, TALLAHASSEE, FL 32309

Ph: 850.385.6363 Fax: 850.385.6337 www.TLGproperty.com



The information shown or contained herein is believed to be accurate but is not warranted or guaranteed, is subject to errors, omissions and changes without notice and should be independently verified.



COMMERCIAL REAL ESTATE

FOR ADDITIONAL INFORMATION, CONTACT:

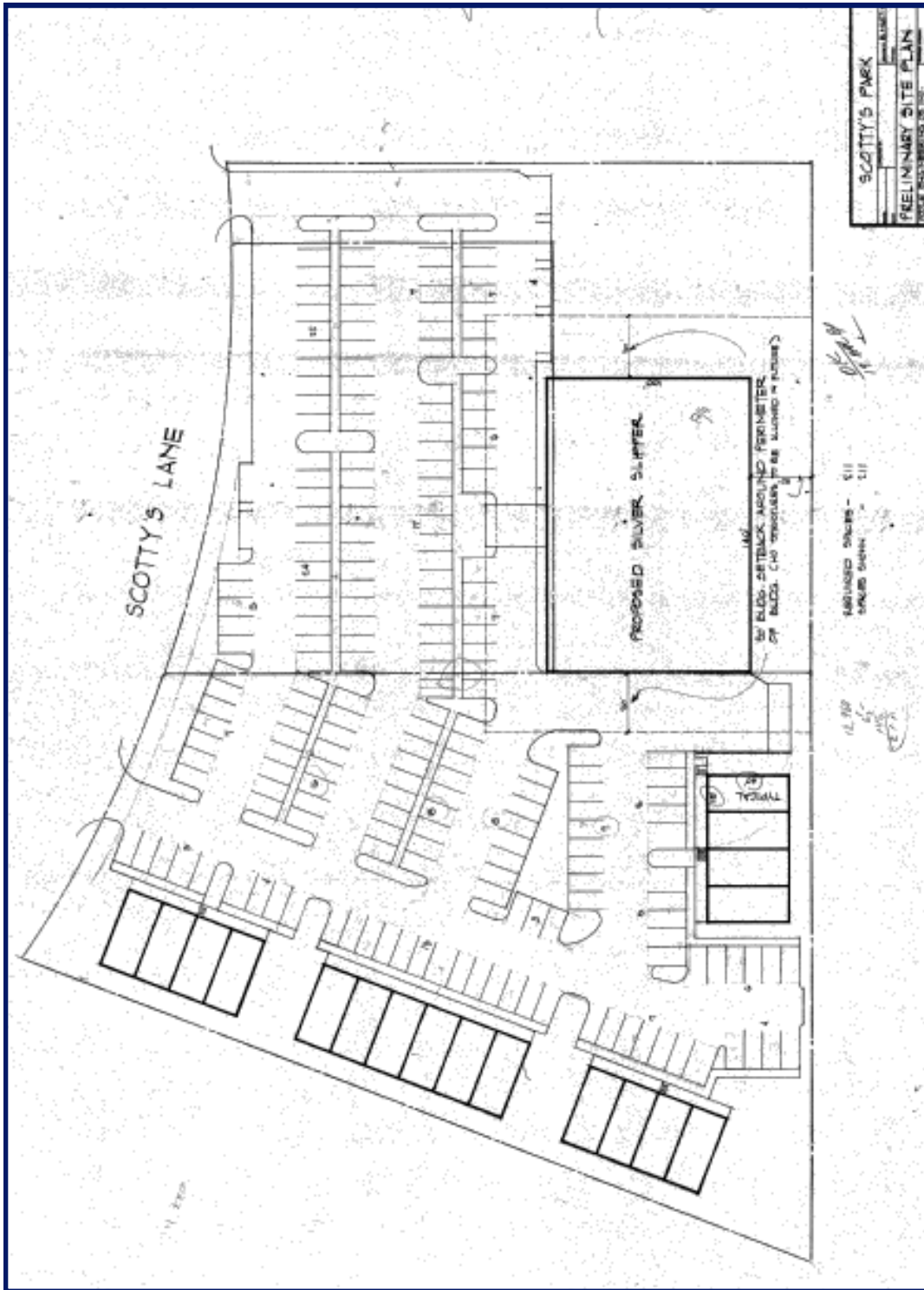
LEWIS BUFORD | 850.591.6363 | lewis@TLGproperty.com

3520 THOMASVILLE ROAD, SUITE 200, TALLAHASSEE, FL 32309

Ph: 850.385.6363 Fax: 850.385.6337 www.TLGproperty.com



The information shown or contained herein is believed to be accurate but is not warranted or guaranteed, is subject to errors, omissions and changes without notice and should be independently verified.



COMMERCIAL REAL ESTATE

FOR ADDITIONAL INFORMATION, CONTACT:

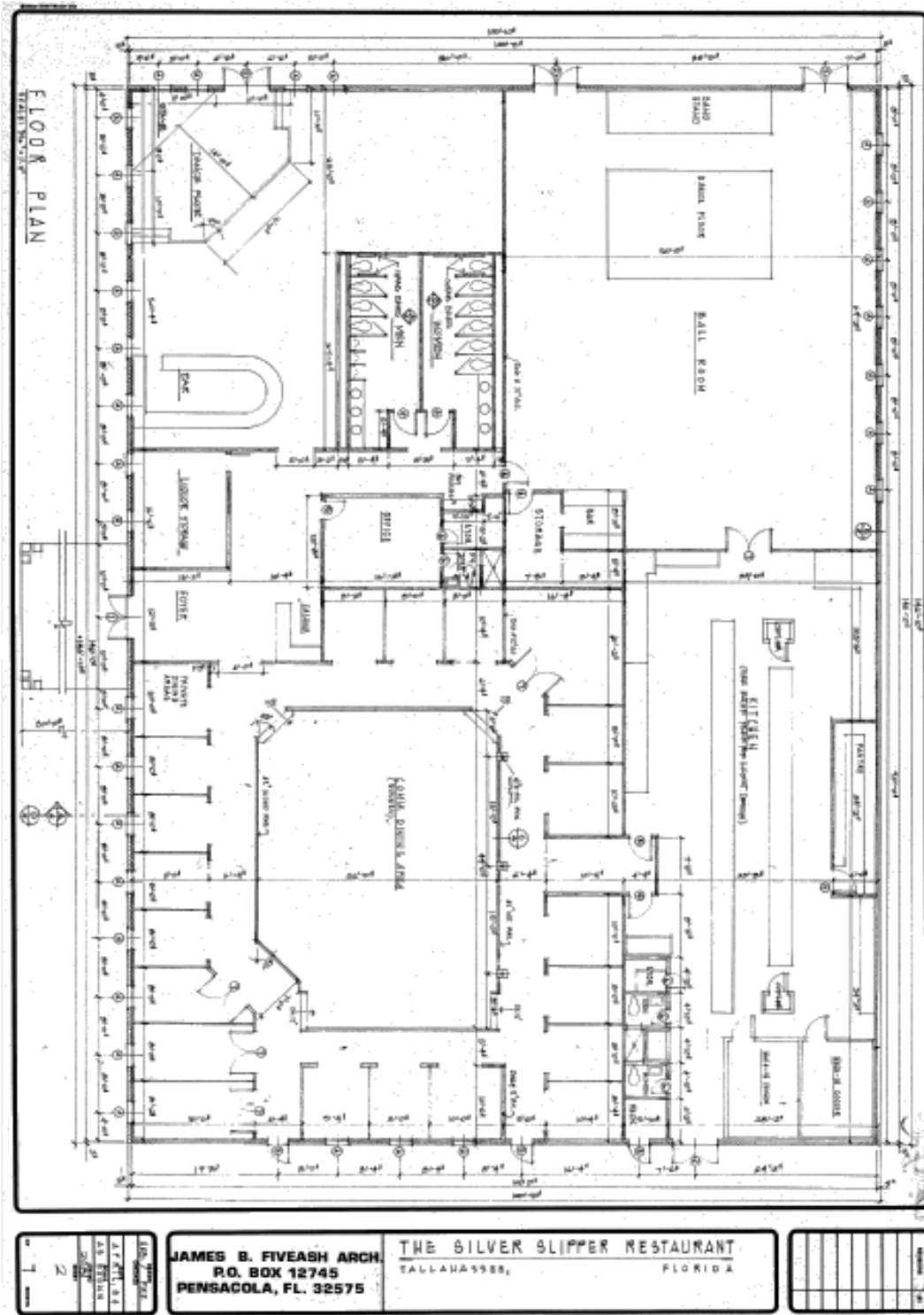
LEWIS BUFORD | 850.591.6363 | lewis@TLGproperty.com

3520 THOMASVILLE ROAD, SUITE 200, TALLAHASSEE, FL 32309

Ph: 850.385.6363 Fax: 850.385.6337 www.TLGproperty.com



The information shown or contained herein is believed to be accurate but is not warranted or guaranteed, is subject to errors, omissions and changes without notice and should be independently verified.



COMMERCIAL REAL ESTATE

FOR ADDITIONAL INFORMATION, CONTACT:

LEWIS BUFORD | 850.591.6363 | lewis@TLGproperty.com

3520 THOMASVILLE ROAD, SUITE 200, TALLAHASSEE, FL 32309

Ph: 850.385.6363 Fax: 850.385.6337 www.TLGproperty.com



The information shown or contained herein is believed to be accurate but is not warranted or guaranteed, is subject to errors, omissions and changes without notice and should be independently verified.